



Corporate Presentation


2013

Safe harbor

Neither the information nor any opinion expressed in this presentation constitutes an offer, or invitation to make an offer, or to buy any security issued by the company. This presentation contains predictions, estimates or other information regarding the Company's operations which are forward looking in nature. While these forward looking statements represent our best current judgment on what the future holds, they are subject to risks and uncertainties that could cause actual results to differ materially and may involve risk and uncertainty. This presentation is prepared for general purposes only and does not have any regard to the specific investment objectives, financial situation and particular needs of any specific person. No liability for any loss will arise with the company as a result of the action taken on the basis of information contained herein.

For a discussion of the risks and uncertainties that may cause results to differ, you should review GTL's filings with stock exchanges, including the annual report and quarterly disclosures.

June 2012

A faint, light gray outline map of the world is centered in the background of the slide.

“Provide affordable universal connectivity by offering quality & green network solutions to telecom carriers across the world”

GTL at a Glance



Business

Network Services

Founded

1987

Global Headquarters

Mumbai, India

Global Presence

Operations spread across Africa, Asia- Pacific, Middle East, North America, South Asia and Western & Central Europe

Domain Expertise

Telecom

ASSOCIATES

6,478 (As of Mar 31, 2013)

Stock Listed on

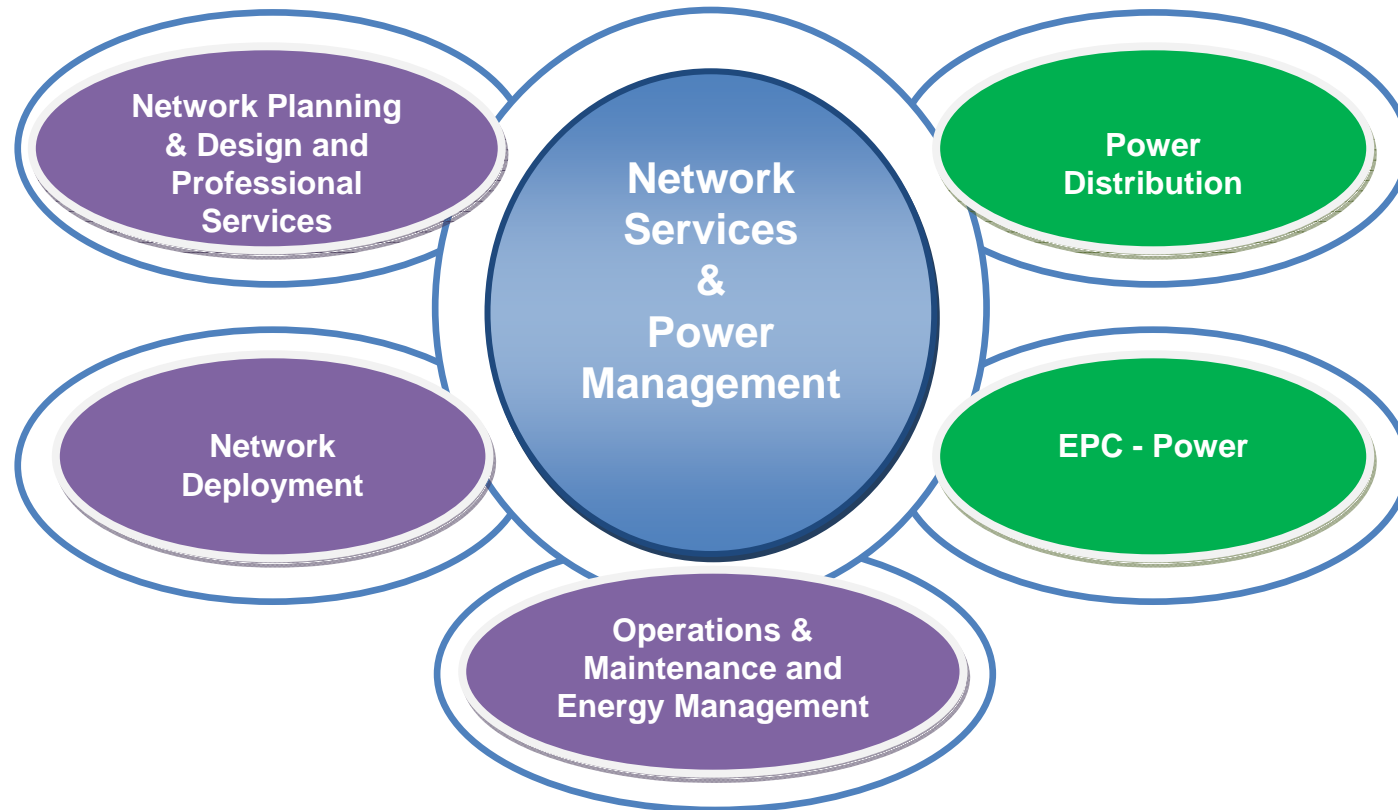
BSE, NSE

Total income

US\$ 479 Mn

Service Offerings





Network Services for Telco, OEMs & Tower companies

Network Planning & Design,

- Nominal cell planning
- CW test and model tuning
- Radio network planning
- Transmission network planning

Network Deployment

- Site / Construction Engineering
- Management Services
- Site Implementation
- Acceptance Services
- Site Documentation

Operations & Maintenance

- Network Monitoring & Operations
- Network Field Maintenance
- Technical Support & Process Management

Benchmarking & optimization

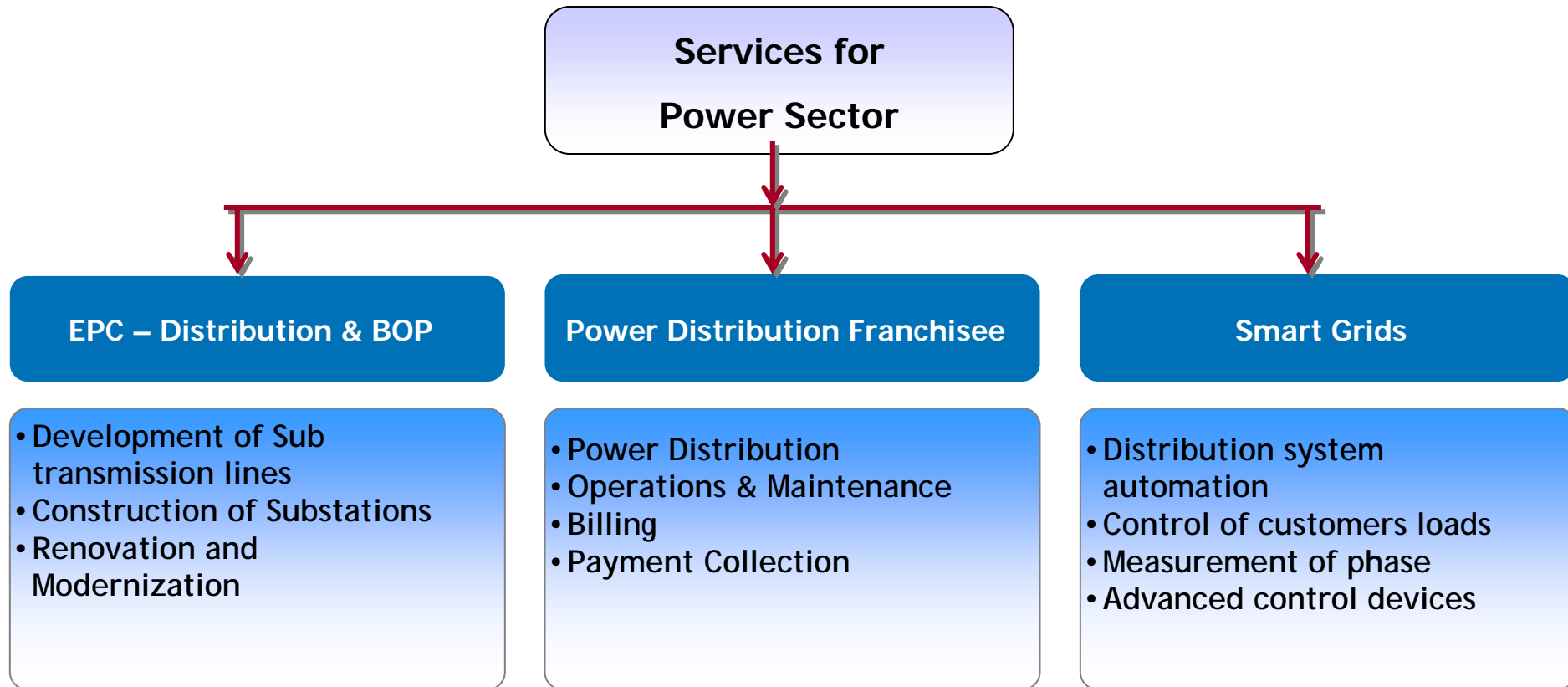
- Network Optimization
- Network Audit & Benchmarking
- IBS planning & Design
- Virtual planning & Optimization

Energy Management

- Energy Audits
- Process improvements
- Technology up gradation
- Alternate sources of energy

Managed Services

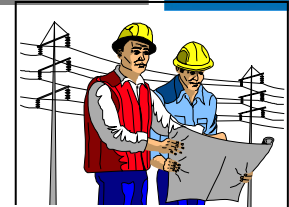
- Network planning & Optimization
- Network Build
- Network O&M



Power Distribution Franchisee

MSEDCL

to supply power at
EHV substations



**All Obligation and Rights of a
Distribution Licensee**

O&M

Planning

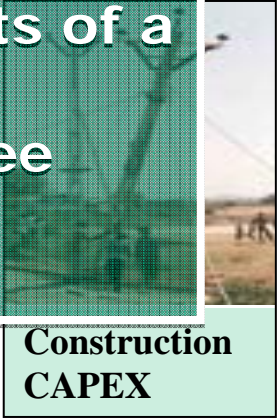
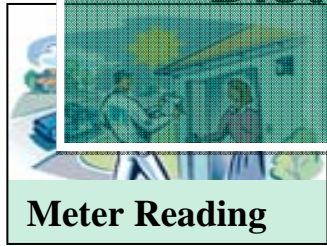
Billing & Collection

Meter Reading

Customer Care

Construction CAPEX

Energy
Input
Metering

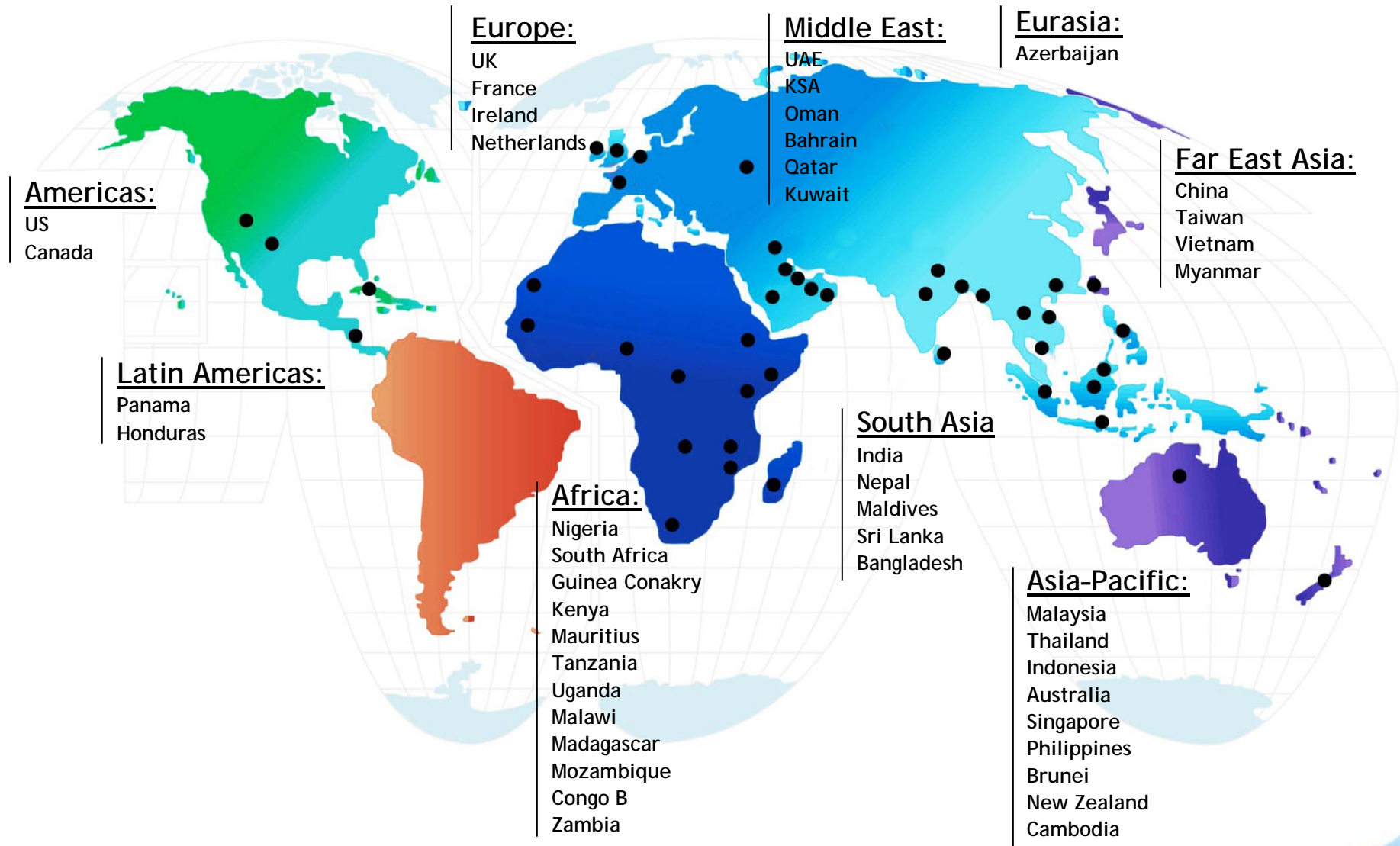


Generation Transmission

Distribution

GTL has won the Electricity Distribution Franchise from MSEDCL
for Aurangabad Urban Circle I & II

Execution Capability



Customer Snapshot

Operators



中国移动通信
CHINA MOBILE

OEM's



- Partial List of Customers
- The logos used here are the trademarks of respective companies and are used here for representation purpose only

Overview of Strategic Alliances



- In 2007, formed a strategic tie-up with Ericsson to address the Managed Network Infrastructure Services (MNS) Market in UK
- Under MNS, GTL offers Network Deployment, O&M, Infrastructure Management and Professional Services to operators like Vodafone, O₂ and MTN



- GTL entered into a engineering co-operation agreement with ZTE
- This will give GTL access to ZTE's Network Infrastructure projects in all its 120 countries of operations



- GTL has entered into a "Global Supplier Co-operation Agreement" with Huawei for worldwide co-operation in Network Services space
- As a part of this agreement, Huawei will train GTL's engineers on its various Technology platforms

Awards & Recognitions

Business Excellence

- GTL ranked # 1 Telecom Turnkey company of the year - V&D 100 in 2008, 2009 and 2010
- GTL received Ramkrishna Bajaj National Quality Award for Business Excellence
- GTL's Operations in Middle East, Africa & Canada received awards from Huawei



Corporate Governance & Excellence

- GTL Featured in S&P's ESG India Index
- GTL received "Certificate for Strong commitment" from CII ITC Center of excellence for Sustainable Development
- GTL wins "World Class Award" from International Asia Pacific Quality Organisation



Corporate Social Responsibility

- GTL has received Greentech Environment Excellence Award in 2009 and 2010
- GTL Foundation received Golden Peacock Award for Innovation in Social Responsibility
- GTL received Pegasus Award for Social Responsibility
- GTL received enterprise Asia's "Green Leadership" Award for its energy management initiatives





Education

- **Gyan IT**
(Spreading IT literacy among rural areas)
- **KNOW**
(Mobile Computer lab)
- **VKC**
(Village Knowledge Center)
- **Gyan Deep**
(Train the trainer)

Disability

- **Netra**
(Computer Lab for Blind)
- **Talk 64**
(Chess software for Blind)
- **Swayam**
(Employment opportunities for Blind)
- **Samman**
(Mobility for the disabled)

Health

- **Arogya**
(Mobile health van in Rural Areas)
- **Emergency Medical Assistance**
(Curative medical care)
- **Blood Donation**
(Donate blood save life)

Community

- **Pralay**
(Supporting victims of natural calamities)
- **Gyan Deep**
(Counselling the street children)
- **Marathon run**
(Participated in the sporting event to support visually challenged persons)

GTL sets aside up to one percent of it's profits towards CSR activities and encourages active employee participation



Thank You



Contact Information:
E-Mail : marketing@gtllimited.com